

# State of Wyoming Corner Record

(In compliance with the **CORNER PERPETUATION AND FILING ACT**, Wyoming Statutes, 1997 Section 33-29-140 et. seq., and the Rules and Regulations of the Board of Professional Engineers and Professional Land Surveyors)

Reverse side of this form may be used if more space is needed.

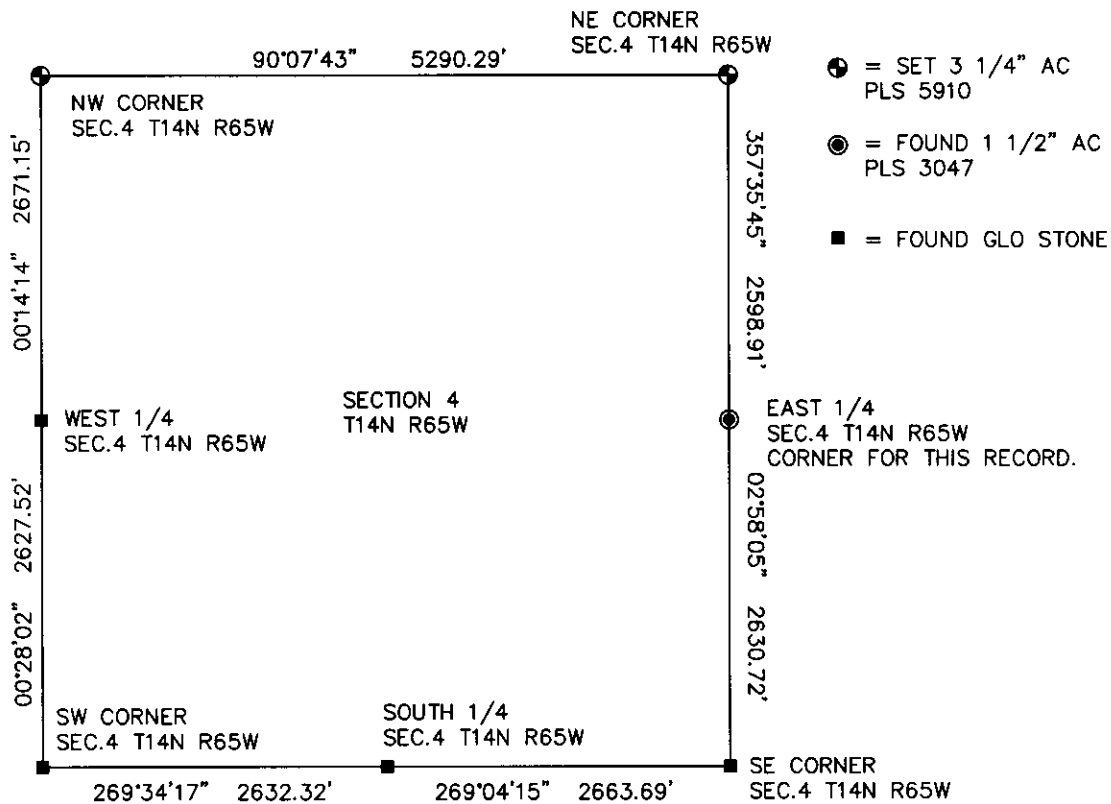
Record of original survey and citation of source of historical information (if corner is lost or obliterated). Description of corner monumentation evidence found and/or monument and accessories established to perpetuate the location of this corner. Sketch of relative location of monument, accessories, and reference points with course and distance to adjacent corner(s) (if determined in this survey). Method and rationale for reestablishment of lost or obliterated corner.

**RECORD:** SET GRANITE BOULDER 18 X 8 X 8 FOR 1/4 SECTION CORNER.

**MONUMENT FOUND:** FOUND A WELL SET 1 1/2" ALUMINUM CAP LS 3047 FROM CORNER RECORD DATED APR 10 1995. CAP UNDISTURBED, STONE POSSIBLY UNDER CONCRETE.

**MONUMENT SET:** NOTHING SET.

**REFERENCES:** CAP LIES AT NORTH EDGE OF CONCRETE THAT WAS SET AROUND STEEL FENCE POST RUNNING S-W-E. NO REFERENCES WERE SET.

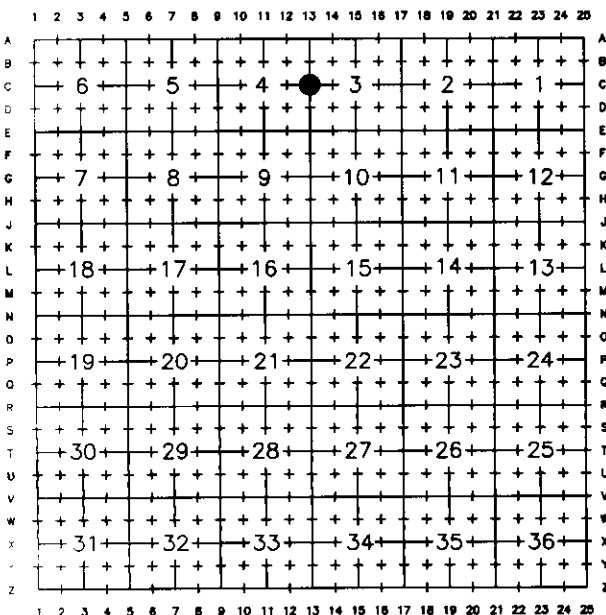


Date of Field Work: 10/05/10

Office Reference: 10190

## Monument Inscription

### Cross Index Plat



Firm/Agency, Address

**STEIL SURVEYING SERVICES LLC**  
**1102 WEST 19th STREET**  
**CHEYENNE WY 82001**

Telephone Number: **(307) 634-7273**

This corner record was prepared by me or under my direction and supervision.

SEAL & SIGNATURE



Corner Name EAST 1/4 Section 4, T 14 N, R 65 W, 6th P.M.

Cross-Index No.: C-13

County: LARAMIE Wyoming

SBRPEPLS/PLSW: March 1994; PLSW January 1998

